



DAYLESFORD 265

Modena Facade

WINTON ESTATE, DEANSIDE

4  2  2 

Priced From \$612,930

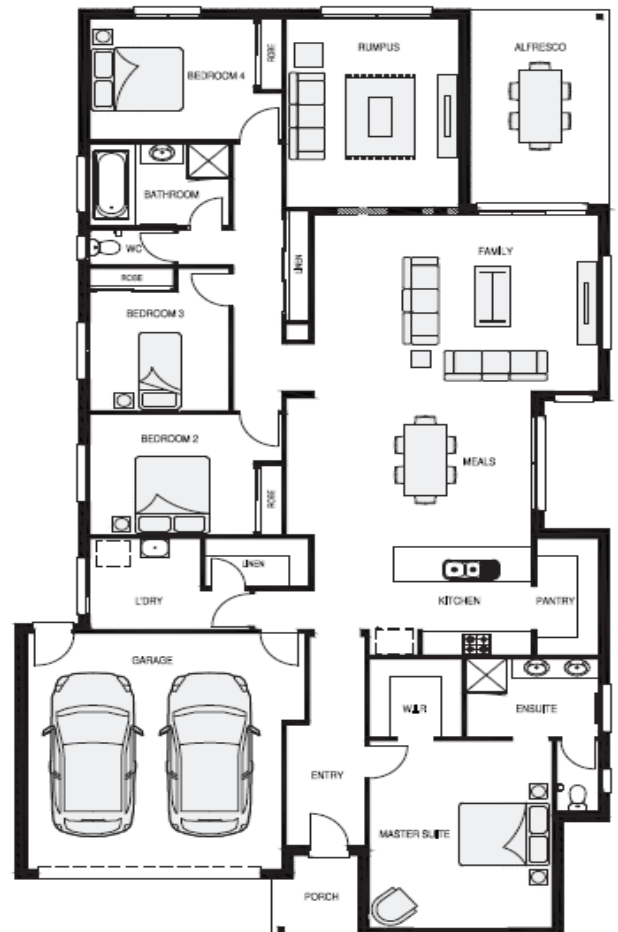
Lot Address: **Lot 105 Winton Estate**

Lot Size: **448m²**

Lot Dimensions: **14.0m x 32m**

House & Land Package Includes:

- Site Cost Allowance
- OHS & Council Requirements
- Flooring Throughout
- Colour Driveway
- 20mm Stone Benchtops to Kitchen
- 900mm Stainless Steel appliances incl Dishwasher
- Evaporative Cooling
- Downlights
- Plus much much more



The information contained in this brochure is to be used as a guide only. Prices are subject to change according to soil & test survey. Images are for illustrative purposes only. Promotions may change at any

HOUSE & LAND PKG — DAYLESFORD 265

Priced From **\$612,930***

**Based on standard floorplan, facade and standard inclusions*

DAYLESFORD 265

The Daylesford 265 is beautifully designed with open plan living, kitchen/meals and an adjacent rumpus provides a connected family living experience.

With a generous alfresco, four bedrooms and plentiful storage, this house is waiting for you to make it your home.

HOUSE EXTERNAL DIMENSIONS

House Width:	12800mm
House Length:	23650mm

AREA	m2	SQUARES
Living	228.83 m2	24.63 sq
Garage	37.72 m2	4.06 sq
Porch	1.41 m2	0.15 sq
Alfresco	16.63 m2	1.79 sq
Total Area	265.46 m2	28.57 sq

ROOM DIMENSIONS

Family	4.50m x 3.73m	Meals	4.71m x 3.28m	Rumpus	4.81m x 3.73m
Master	3.30m x 3.60m	Bed 2	3.00m x 3.00m	Bed 3	3.00m x 3.00m
Bed 4	3.00m x 3.00m	Alfresco	4.89m x 3.00m	Garage	6.02m x 5.52m